

MONTHLY MEMBERSHIP PROGRESS REPORT

LOCATION VERMONT

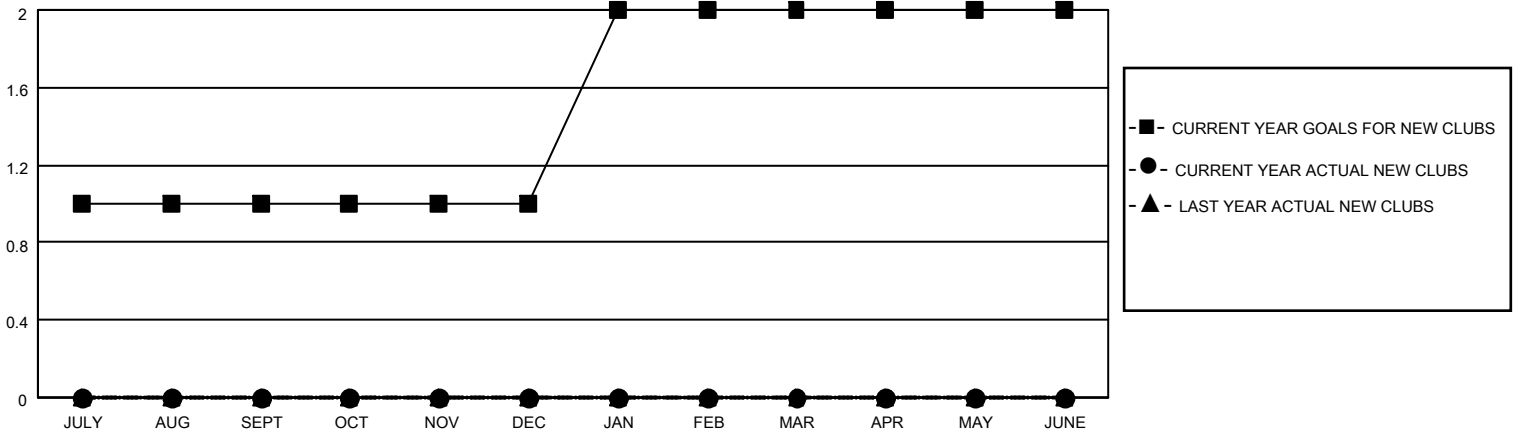
District 45

Results as of: 5/31/2021

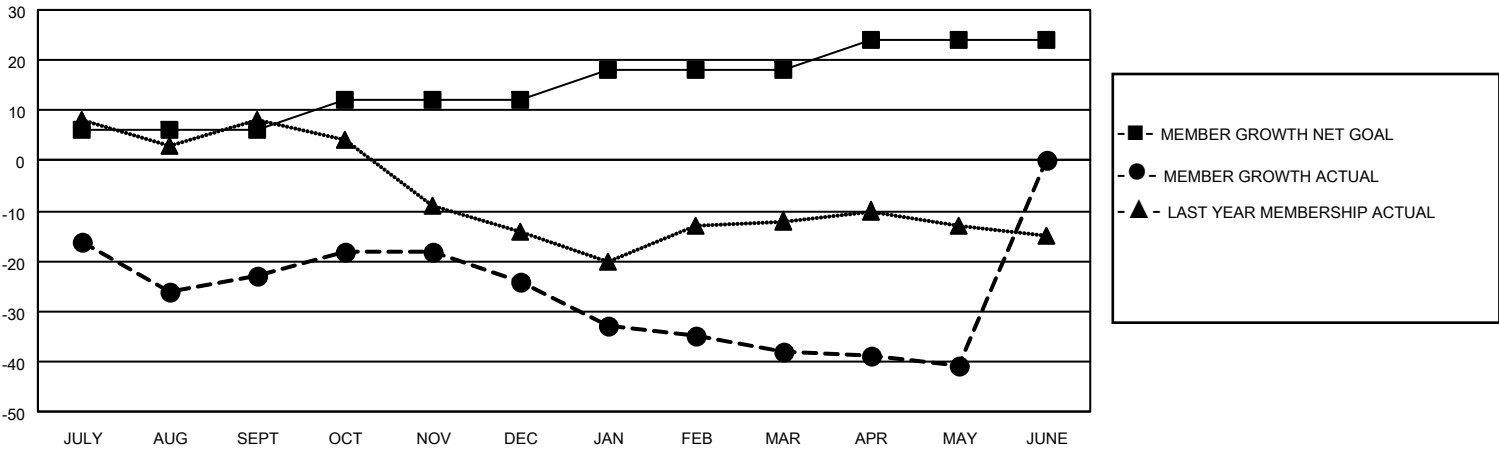
Clubs			
RESULTS FOR 2020-2021			
QUARTER	NEW CLUB GOAL	NEW CLUBS	DROPPED CLUBS
JULY/AUG/SEPT	1	0	0
OCT/NOV/DEC	0	0	0
JAN/FEB/MAR	1	0	0
APR/MAY/JUNE	0	0	0

Members			
RESULTS FOR 2020-2021			
QUARTER	MEMBER GROWTH NET GOAL	MEMBER GROWTH ACTUAL	DROPPED MEMBERS ACTUAL (including transfers)
JULY/AUG/SEPT	6	24	37
OCT/NOV/DEC	6	12	13
JAN/FEB/MAR	6	10	24
APR/MAY/JUNE	6	9	10

GOALS AND ACTUAL NEW CLUBS CUMULATIVE



GOALS AND ACTUAL MEMBERS CUMULATIVE



DROPPED CLUBS: 0	20 CLUBS OF 32 ADDED 1 OR MORE NEW MEMBERS	<u>GENDER DISTRIBUTION</u> MALE 624 (61.36%) FEMALE 393 (38.64%)
<u>DROPPED MEMBERS</u> DECEASED 19 CLUB CANCELLED 0 OTHER 65 <hr/> TOTAL 84	CLICK HERE FOR CUMULATIVE MEMBERSHIP DATA	TOTAL FAMILY UNIT MEMBERS 205 FAMILY MEMBERS PAYING HALF DUES 104